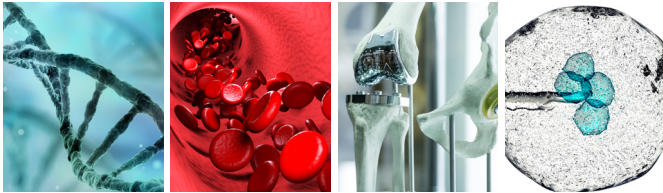


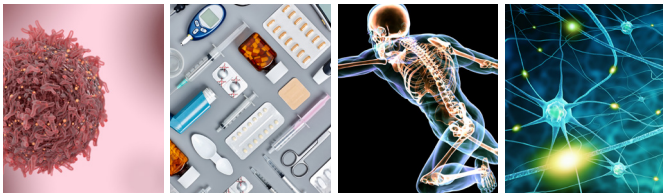


**MARIE SKŁODOWSKA-CURIE
ACTIONS (MSCA)
APPLY WITH RCSI**



INDIVIDUAL FELLOWSHIPS

Individual Fellowships provide support for experienced researchers moving between countries within, beyond or to Europe.



DO YOU WANT TO EXPERIENCE OTHER RESEARCH ENVIRONMENTS?

DO YOU WANT TO IMPROVE YOUR SCIENTIFIC CAREER?

DO YOU WANT TO DIVERSIFY YOUR RESEARCH?

RCSI DEVELOPING HEALTHCARE LEADERS WHO MAKE A DIFFERENCE WORLDWIDE

DEFINITIONS

Experienced Researchers: In possession of a doctoral degree (PhD) or have at least 4 years of full-time equivalent research experience.

Nationality: Any.

Mobility rule: You must not have resided or carried out your main activity (work/studies) in Ireland for more than 12 months in the last 3 years immediately prior to the call deadline.

Relaxed Mobility: You should not have spent in Ireland more than 36 months in the last 5 years, prior to the call deadline.

FELLOWSHIPS AND PANELS

European Fellowship (EF) 1 or 2 years

Standard Fellowship (SF): You must not have spent in Ireland more than 12 months in the last 3 years.

Career Restart (CAR): For researchers who have taken a career break (any reason) for at least 12 months before the call deadline (Relaxed Mobility applies).

Reintegration (RI): For European long-term residents (>5 years) who intend to move or have recently moved from a Country outside Europe (Relaxed Mobility applies).

Global Fellowship (GF) 2 or 3 years

You can apply if you wish to get some experience outside Europe and come back to RCSI.

ALLOWANCES (per month)

Researcher	
Living Allowance*	€4880
Mobility Allowance	€600
Family Allowance	€500
Institutional	
Research, training and networking costs	€800
Management and Indirect costs	€650

* Living allowances are adjusted to cost of living in the Country in which you are hired

WHY RCSI?

The mission of RCSI's research strategy is to improve human health through translational research. We promote innovative research that leads to improved diagnostics, therapeutics and devices; tackles important healthcare delivery issues; informs policy and clinical practice and enhances the quality of education of healthcare professionals.

OFFICE OF RESEARCH AND INNOVATION (ORI)

- / We provide high quality services to assist and support the College's current and incoming research staff in securing research funding and other contracts.
- / We provide advice on grant regulations, guidelines, ethics, policies and agreement conditions and pre and post-award scientific, administrative, and financial support.
- / We manage research grants and infrastructure.

- » We can help in drafting a competitive proposal.
- » We can help you align your proposal with EU and RCSI's mission.
- » We can help you design the most appropriate career development plan for you.

WE ARE HERE FOR YOU!

Contact us at: eufundingsupport@rcsi.ie

